



Creative Career Programme

Prospectus 24/25



WHY CHOOSE ONELAB?

Choose ONELAB to make money from your creative ideas!

ONELAB is a specialist design college for 16-25 years old SEND learners, with active Education, Health and Care Plans.



ONELAB is not like any other schools or colleges because ONELAB is very supportive and caring, they will stick with you from the start to the end.

Muaaz, 2nd Year College Learner

ONELAB College exists to enable creatively gifted and ambitious SEND young people to develop careers in the creative industry by providing them with the skills, resources and networks to access the creative sector.

There is no other specialist SEND College like ONELAB. What sets ONELAB apart is our person-centred approach to learning which unlocks hidden potentials, resulting in remarkable outcomes, behavioural transformations and tangible impact for our young people and their families.

So if you are a young person interested in learning and working in state-of-the-art design studios and facilities, this is the place for you!

ADMISSIONS
admissions@onelab.world

INSTAGRAM
@onelab.world

ONELAB CREATIVE CAREERS PROGRAMME

The ONELAB Creative Careers Programme focuses on offering learners with the skills, knowledge and understanding to be industry ready creative professionals.

Course Length | 4 Years
Days | Mondays to Thursdays (Onsite @ONELAB)
Fridays (Independent Work @Home)

EXCITING

CREATIVE PATHWAYS

Product Designer

Fashion Designer

Illustrator

Graphic Designer

Objectives

1. Qualifications in Art & Design, Digital Media, Information Technology, Workskills, English, Maths and Business qualifications (as appropriate based on career and life goals).
2. Experience of the entire creative entrepreneurship process from designing, making, marketing and selling designs through real-life scenarios at ONELAB's own onsite Retail Store and work experience (as appropriate based on career and life goals).

Qualifications

(Based on Career and Life Goals)

- BTEC Level 1 Art & Design
- BTEC Level 1 Digital Media
- BTEC Level 1 Information Technology
- BTEC Level 1 Business
- BTEC Level 1 Workskills
- BTEC Level 2 Art & Design
- BTEC Level 2 Creative Media Skills
- BTEC Level 3 Art, Design & Media Practice
- UAL Level 2 Retail and Fashion Business
- UAL Level 3 Diploma Art & Design
- Functional Skills English Level 1 + 2
- Functional Skills Maths Level 1 + 2

ONELAB College is the best college I have ever been to and I have ever worked in. We go on research trips to develop our skills, such as communication, design, maths and English skills.

Nadeemah, 2nd Year College Learner

OUTSTANDING



4-Years of Experiential Learning **LEARN THE SKILLS**

BE
Creative



DESIGN

ONELAB teaches learners the skills and knowledge base to transform their creative ideas into designed products at a creative industry professional level.



MAKE

ONELAB teaches learners how to prototype and make their designed products come to life using creative industry standard, state-of-the-art equipment and technology, located onsite.



SELL

ONELAB teaches learners how to sell and market their designed products to real-life customers at the ONELAB Retail Shop.



Take a Deep Breath

4-Years of Experiential Learning

MATHS

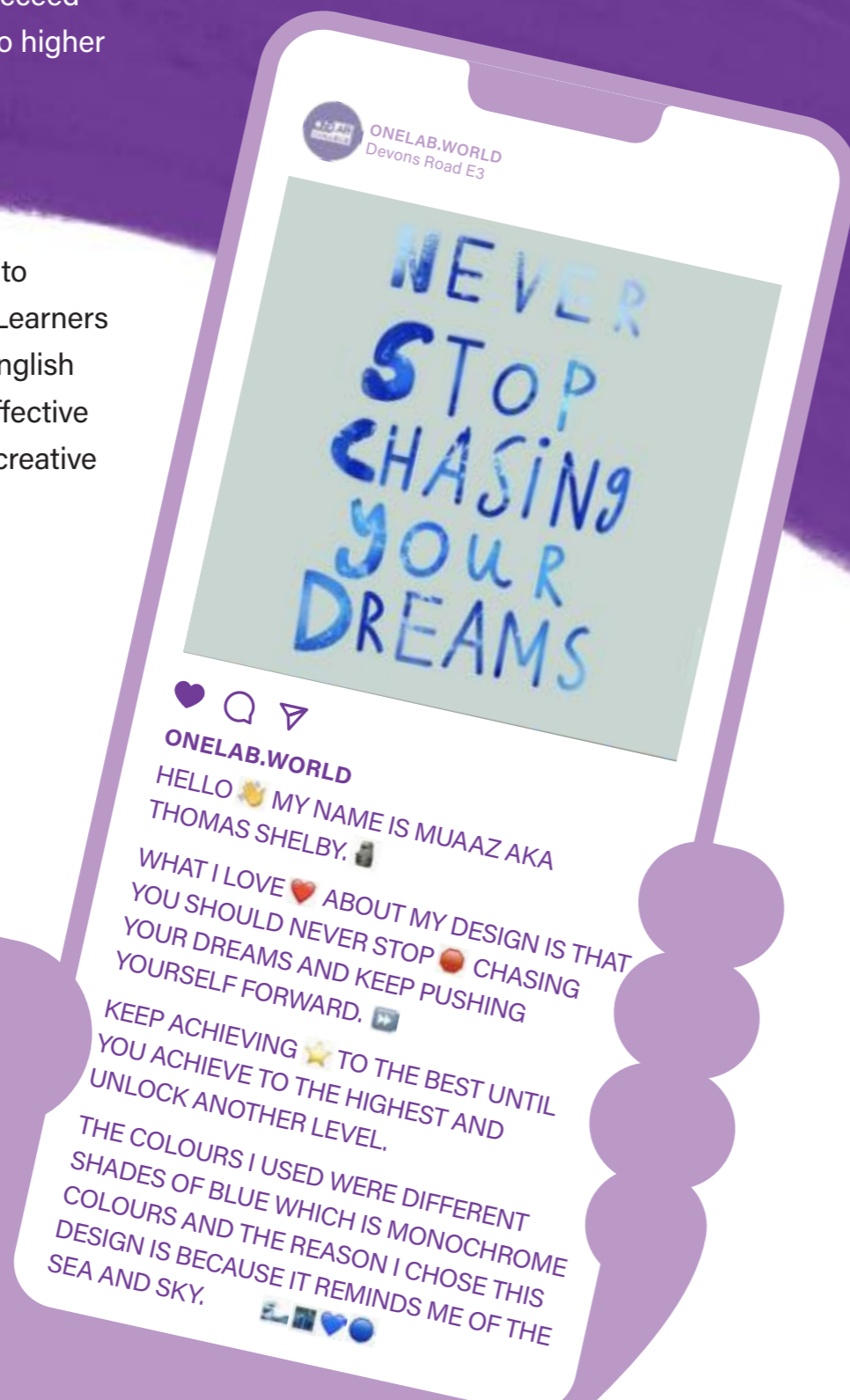
4-Years of Experiential Learning

ENGLISH

English at ONELAB is designed for each young person to achieve their career and life goals.

ONELAB's goal is to provide every learner with the qualifications they need to succeed in life, gain employment or transition to higher education.

Learners will gain the skills they need to communicate verbally and in writing. Learners will finally discover the power of the English language, allowing them to become effective communicators in life, and within the creative industry.



1. Challenge each learner academically based on career and life goals.



2. Prepare each learner for the world of work or transition to higher education.



ONELAB aims to provide learners with recognised qualifications by supporting learners to become problem solvers.

ONELAB's person-centred approach to learning means that learners gain the relevant skills and knowledge required to achieve their career and life goals.



RESOURCES & FACILITIES

MASTERCLASS

ONELAB's masterclasses from a range of industry professionals offers learners greater insights into the creative industry. Masterclasses are an invaluable tool for nurturing real world professional growth.

MENTORS

Selected learners will be given the opportunity to be mentored by an industry professional. Mentors will offer advice based on their first hand experience of the industry and serve as excellent contacts throughout a learner's education and training journey.

EDUCATIONAL TRIPS

ONELAB offers educational trips and work experience opportunities to learners based on their career goals. Educational trips and work experiences are based on the learner's academic level, level of independence and understanding of Life Skills. Educational and work experience opportunities offer learners the chance to gain hands-on experience within the real world.

ACCESS TO PROFESSIONAL INDUSTRY EQUIPMENT FOR LEARNERS TO MAKE DESIGNED PRODUCTS.



Ultimaker
cricut
EPSON
ARTEZA



EACH LEARNER HAS:

- Individual workstation
- Industry software for digital design
- Apple iPad, Apple pencil & Magic keyboard
- Access to the ONELAB Retail Store to sell their designed products
- Access to professionals working within the creative industry
- Industry standard materials and equipment

ADMISSIONS
admissions@onelab.world

INSTAGRAM
@onelab.world

THE EXPERIENTIAL LEARNING JOURNEY



UNLOCK YOUR HIDDEN POTENTIAL