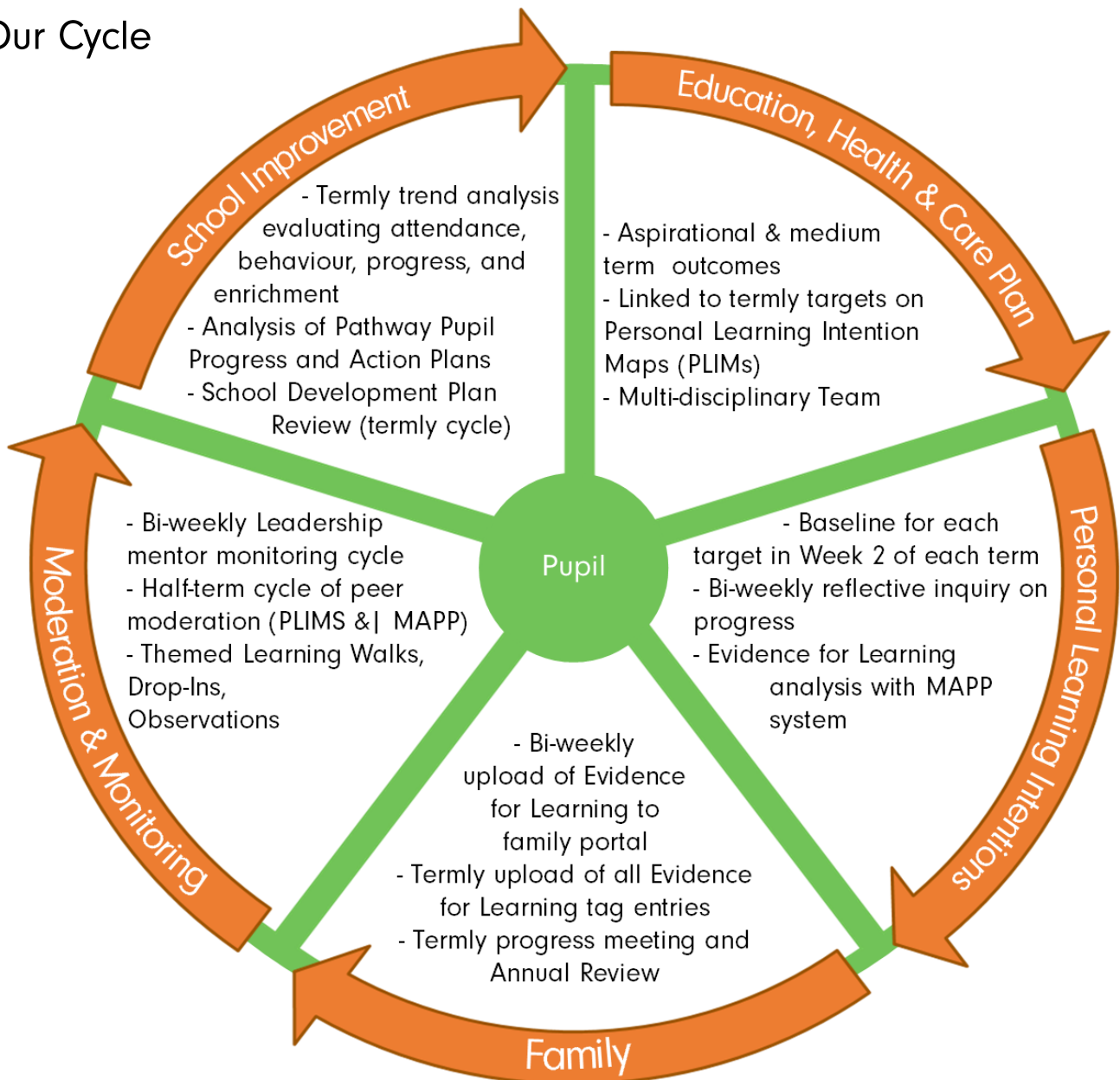


# Assessment Process

The Swiss Cottage School assessment process focuses on moderation and evaluation through a cycle of reflective inquiry. The evidence base at the heart of the reflective enquiry is through the whole school electronic system 'Evidence for Learning' (Efl).

## Our Cycle



## How Do We Enable the Reflective Inquiry?

Monday	Tuesday	Wednesday	Thursday	Friday
8:30 - 9:15	8:30 - 9:15	8:30 - 9:15	8:30 - 9:15	8:30 - 9:15
Teaching Team Planning Meeting	<ul style="list-style-type: none"> <li>• Teaching &amp; Learning priorities</li> <li>• Multi-Agency Teams available for class meetings</li> <li>• Specific Training</li> </ul>	<ul style="list-style-type: none"> <li>• Teaching Briefing</li> <li>• Teaching Assistants establish environment for learning</li> <li>• Specific Training</li> </ul>	<ul style="list-style-type: none"> <li>• Groups of Teachers &amp; Teaching Assistants engage in curriculum pedagogy and research focus through their 'NEST'</li> <li>• Specific Training</li> </ul>	<ul style="list-style-type: none"> <li>• Teaching Team Bi-Weekly Reflection with Evidence for Learning</li> <li>• How are pupils progressing?</li> <li>• How can this inform my planning for next week?</li> </ul>
3:30 - 3:45 End of Day Formative Assessment Reflection				